

# Altered Dominants

C<sup>7</sup><sub>ALT</sub>



F<sup>7</sup><sub>ALT</sub>



B<sup>b7</sup><sub>ALT</sub>



E<sup>b7</sup><sub>ALT</sub>



A<sup>b7</sup><sub>ALT</sub>



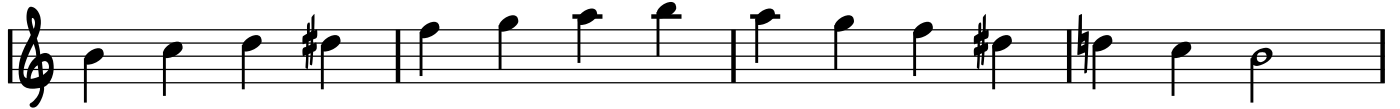
D<sup>b7</sup><sub>ALT</sub>



F<sup>#7</sup><sub>ALT</sub>



B<sup>7</sup><sub>ALT</sub>



E<sup>7</sup><sub>ALT</sub>

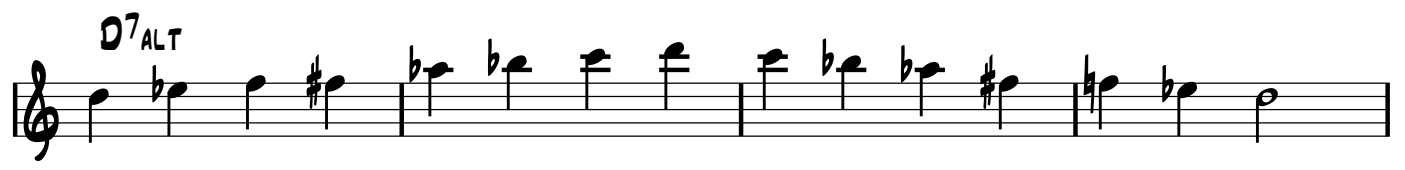


A<sup>7</sup><sub>ALT</sub>



2

D<sup>7</sup><sub>ALT</sub>



A musical staff in treble clef showing a D<sup>7</sup><sub>ALT</sub> chord progression. The notes are: D4, Bb4, D5, F#4, Bb4, Bb4, F4, F4, F4, Bb4, Bb4, F#4, D5, Bb4, D5.

G<sup>7</sup><sub>ALT</sub>



A musical staff in treble clef showing a G<sup>7</sup><sub>ALT</sub> chord progression. The notes are: G4, Bb4, Bb4, D5, Bb4, Bb4, D5, F4, D5, Bb4, Bb4, D5, Bb4, Bb4, G4.